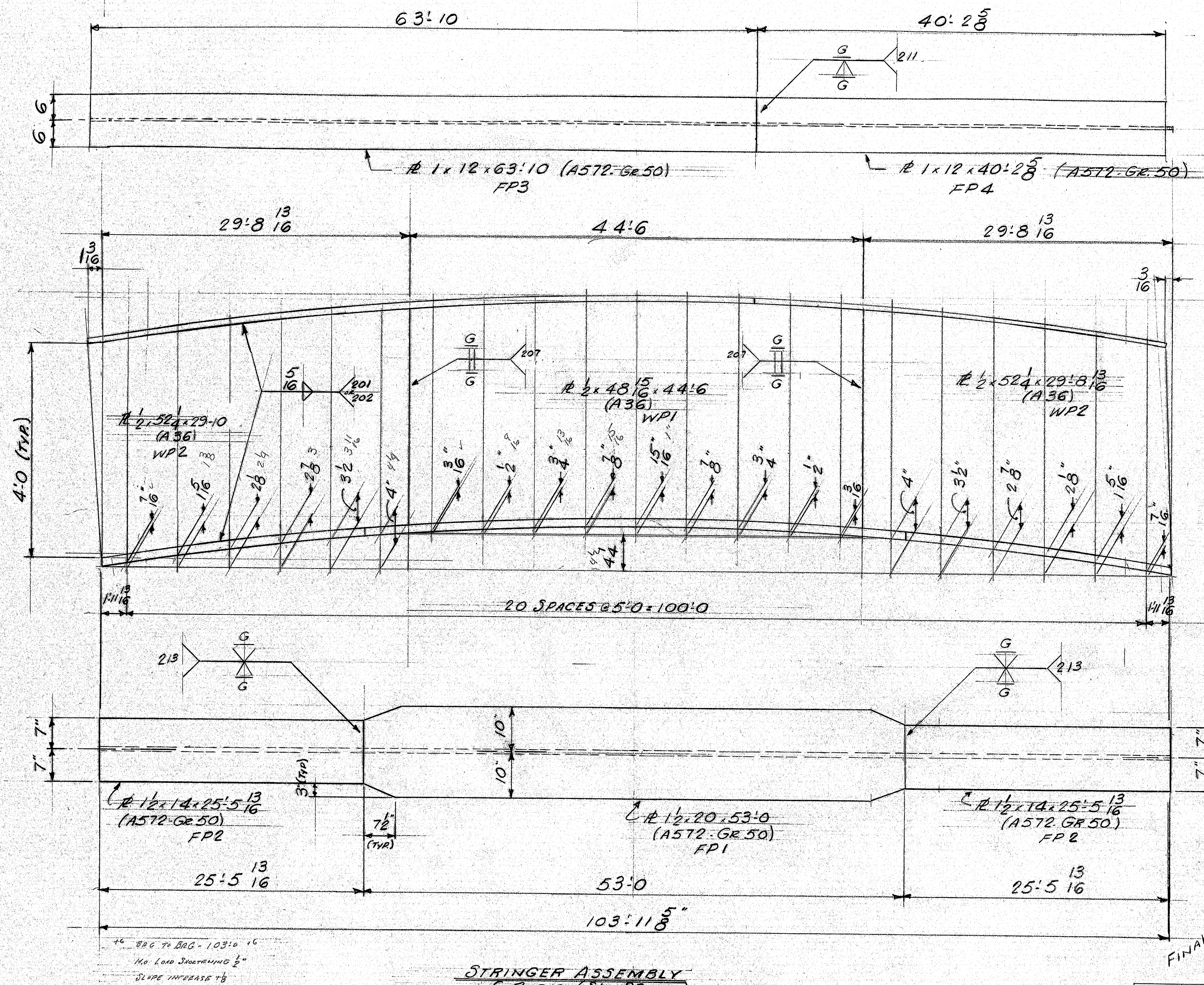


STEEL A36

JOB NO. <u>J253</u>	DWG NO. <u>X1</u>
---------------------	-------------------

161-78



STRINGER ASSEMBLY
6 REQ'D (31-36 INC)

NOTE:
SEE DWGS 4 & 5 FOR FINAL DETAILS
OF STRINGERS.

PROJECT NO. I 95-9(88)

CUSTOMER ORDER NO.:
REFERENCE DRAWINGS:
HOLES:
FIELD CONN:

PAINT:

STRINGER ASSEMBLY

MEQUIER & JONES CORP.

1156 BROADWAY
SOUTH PORTLAND, MAINE 04106

I. 95 N.B. OVER TIMONEY ROAD
SMYRNA, MAINE

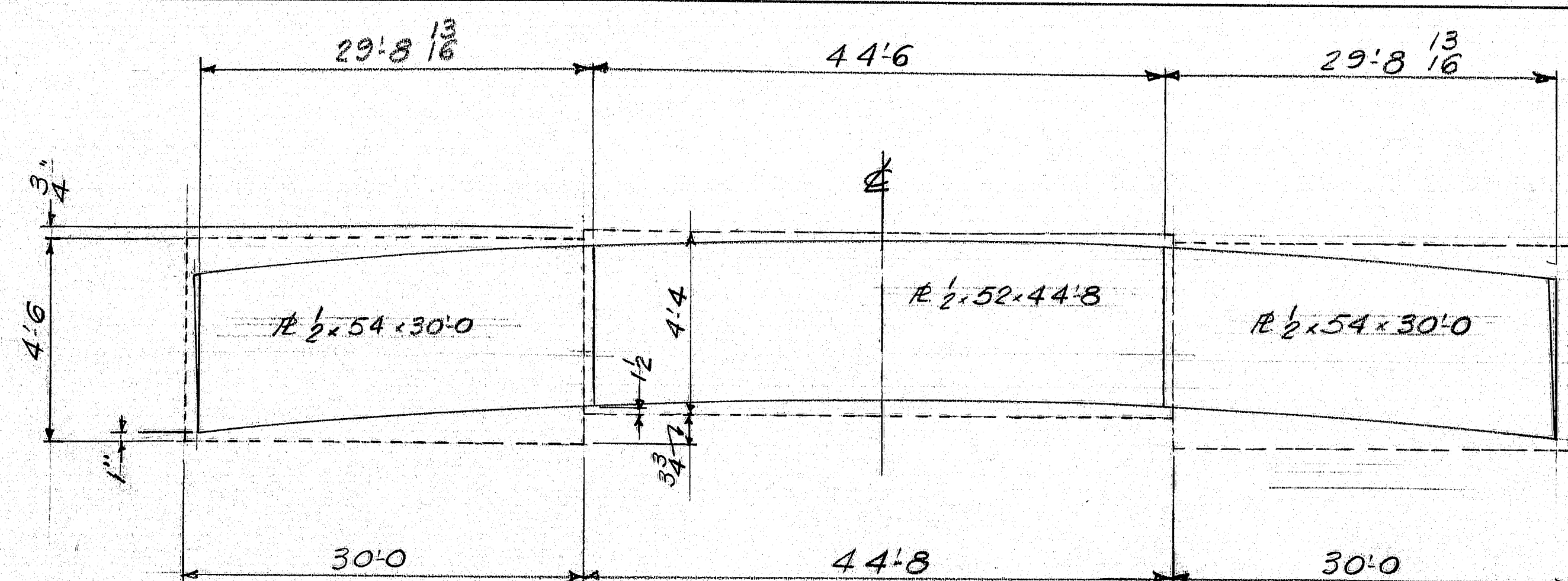
CUSTOMER **DAY & CURRIE**
ARCHITECT **MAINE DEPT. OF TRANSPORTATION**

JOB NO. **J253**

DWG. NO. **2**

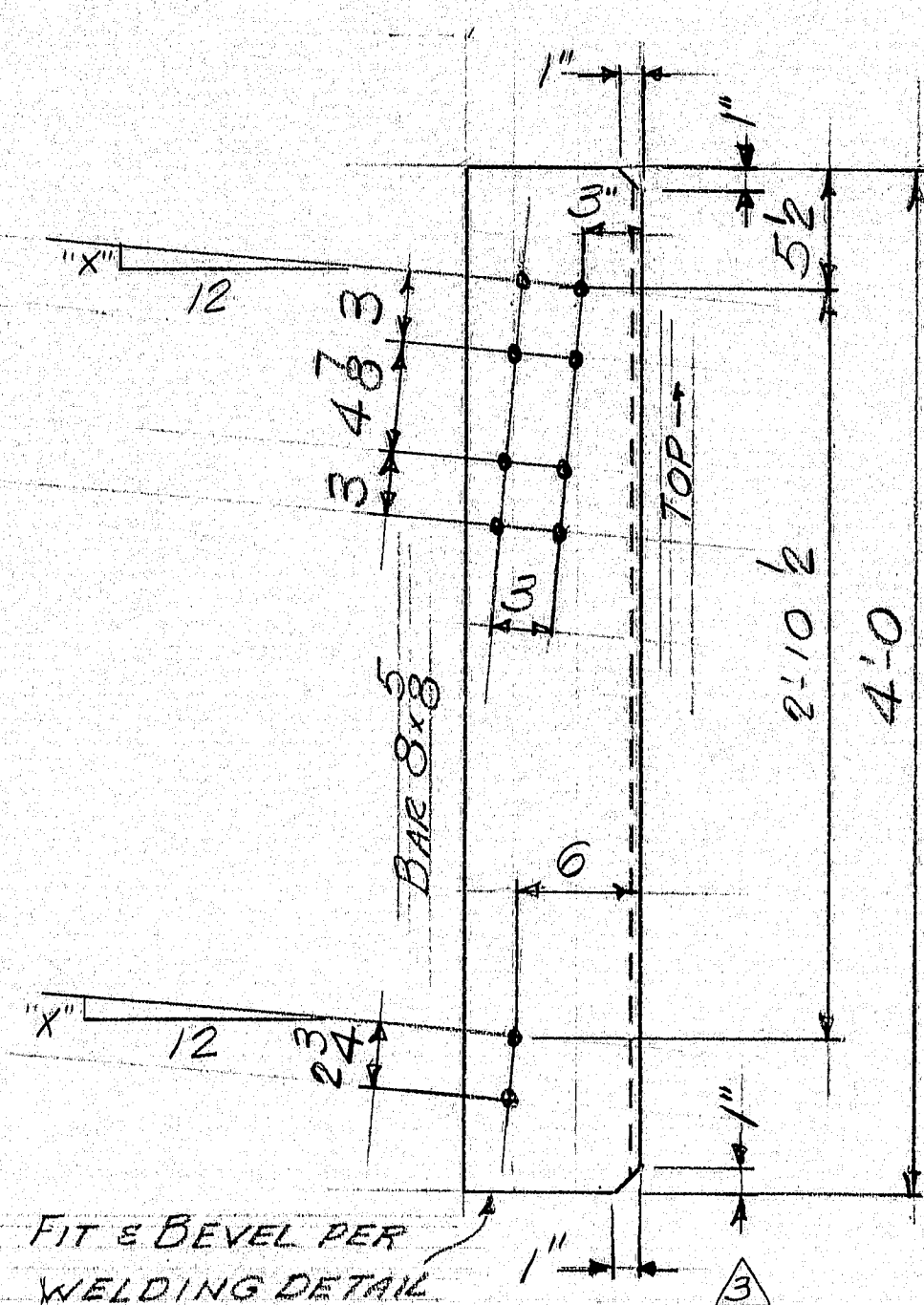
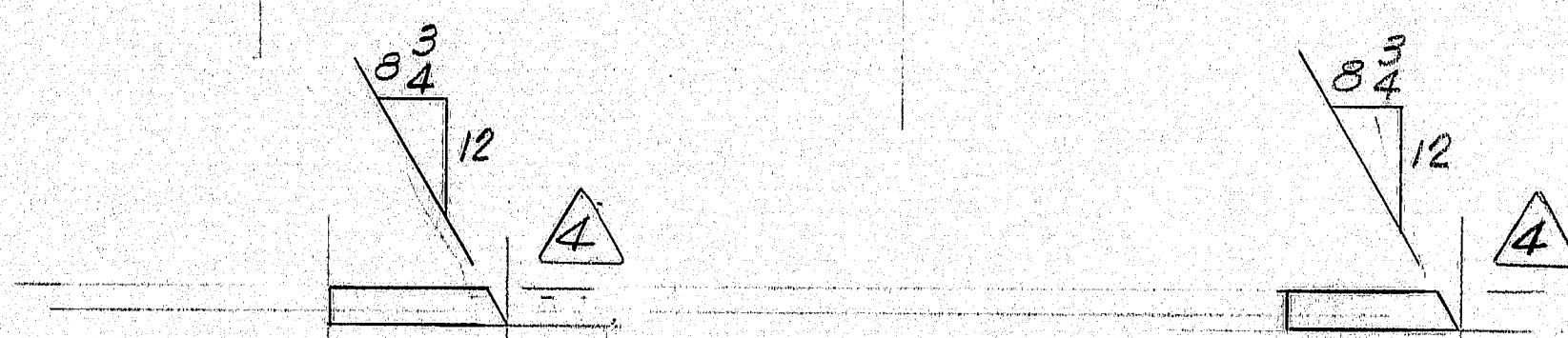
APPR.	3-7	1-25-80
APPR.	3-20-80	4-4-80
SHOP	3-20-80	3-7-80
F. & O.		
DRAWN	P.L.F.	1-15-80
CHECKED	E.E.T.	2-22-80
REVISION		2-27-80
REVISION		3-20-80
REVISION		

161-80

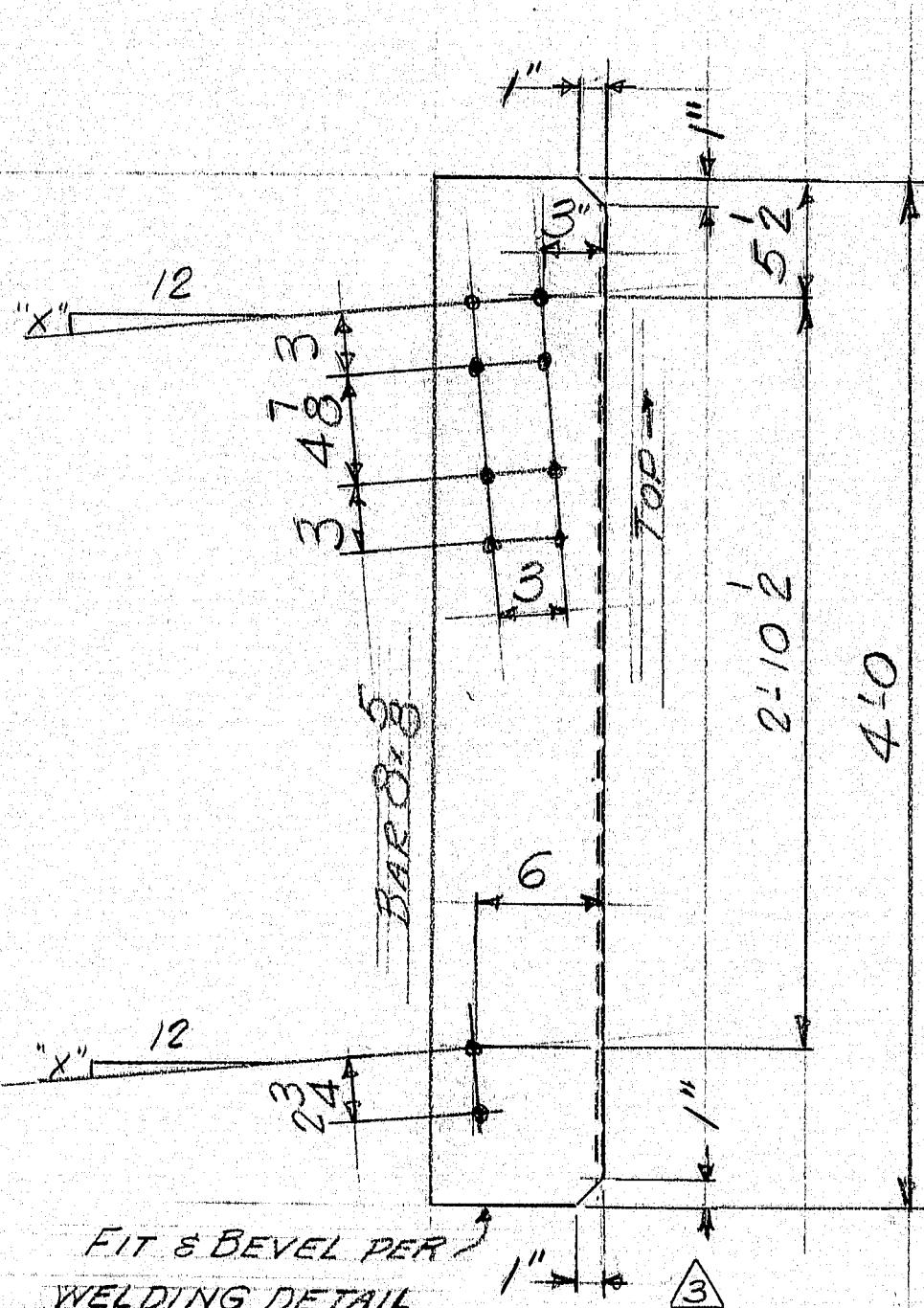


NOTES:
 ASSEMBLE PLATES WITH NATURAL CAMBER UP.
 DO NOT CUT ENDS UNTIL GIRDER IS COMPLETELY ASSEMBLED.
 SEE DWG 2 FOR CAMBER DIAGRAM.

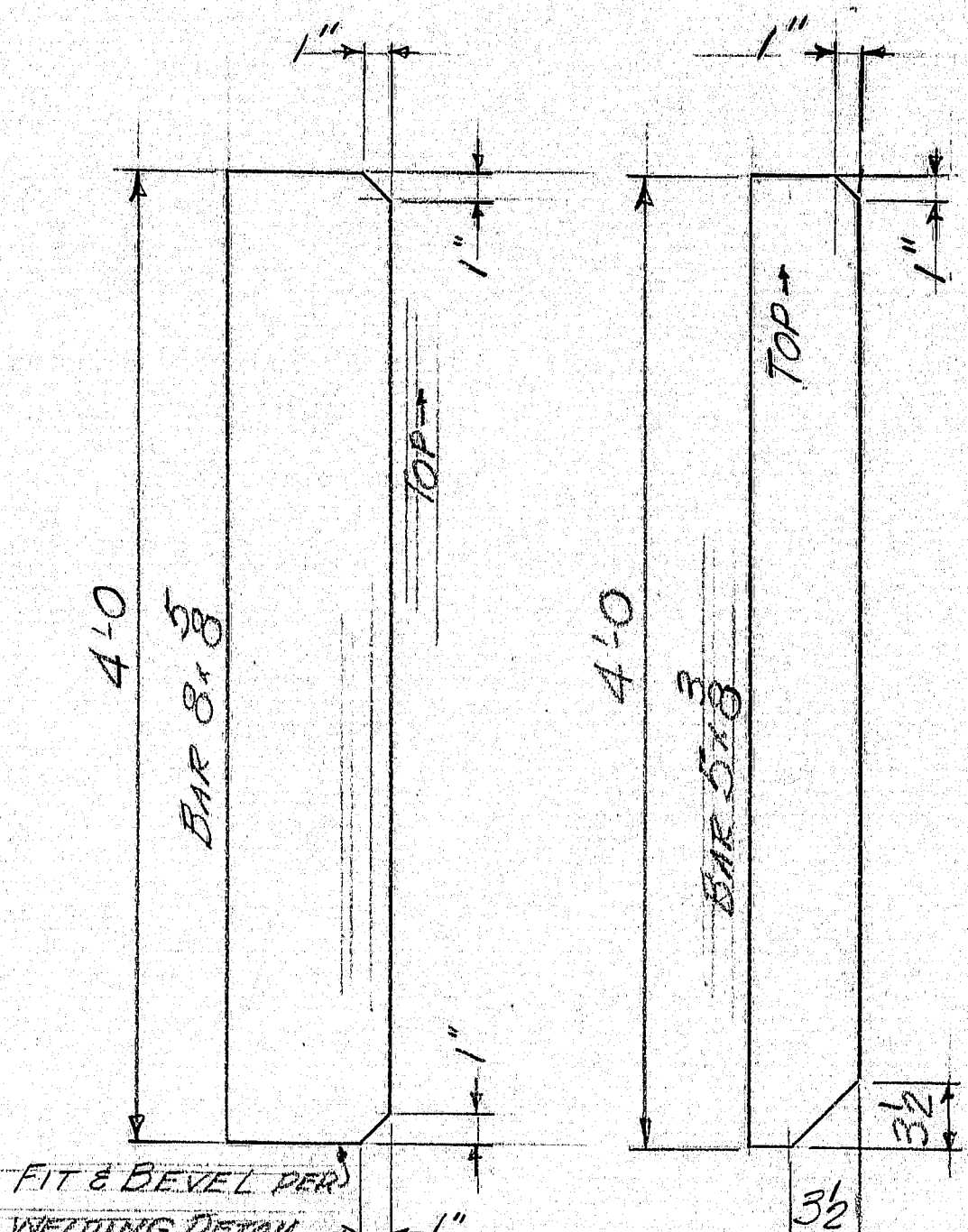
WEB PLATE ASSEMBLY



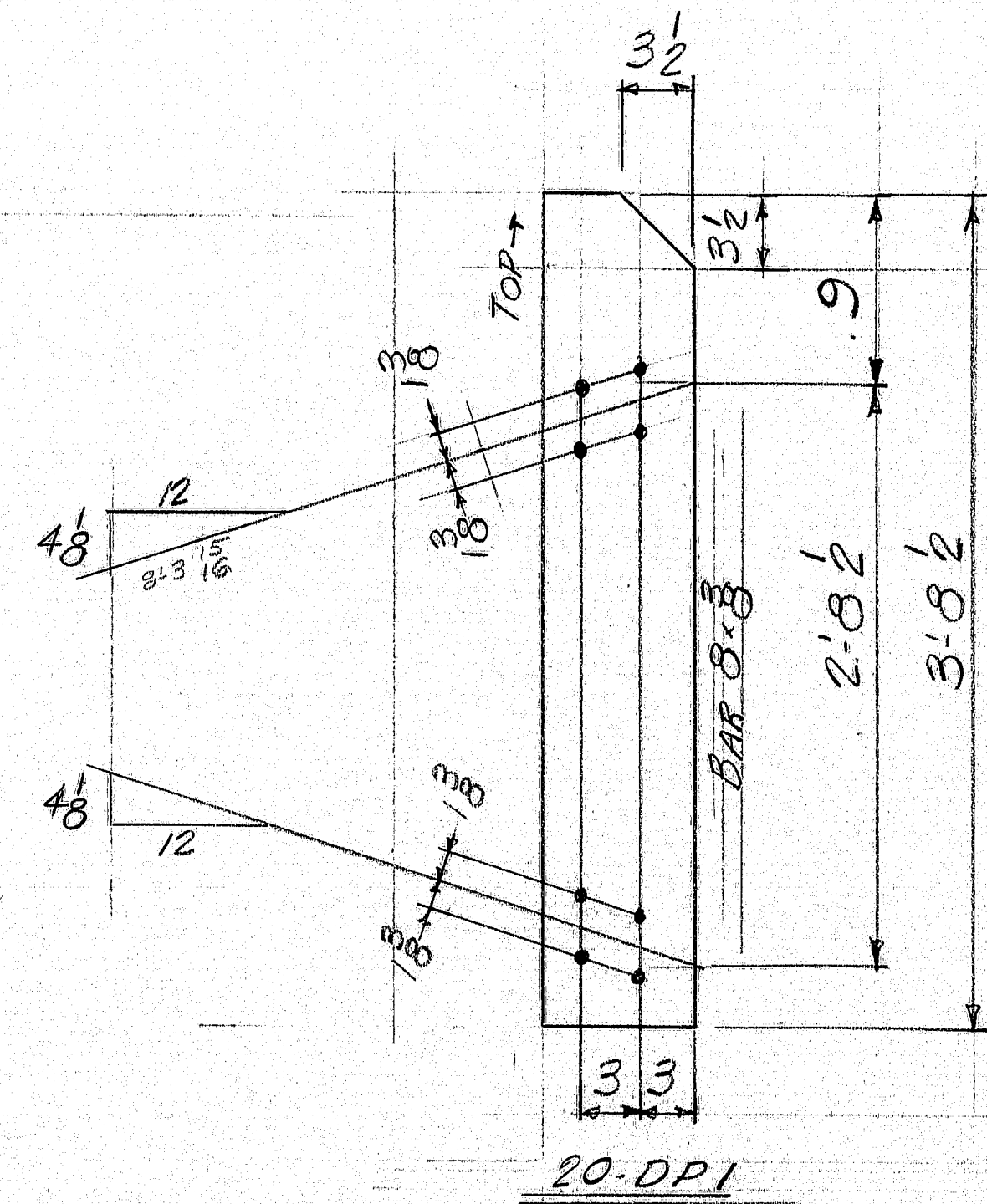
4-B52 ("X" = 5/16)
 2-B54 ("X" = 1/16)
 4-B56 ("X" = 1/8)



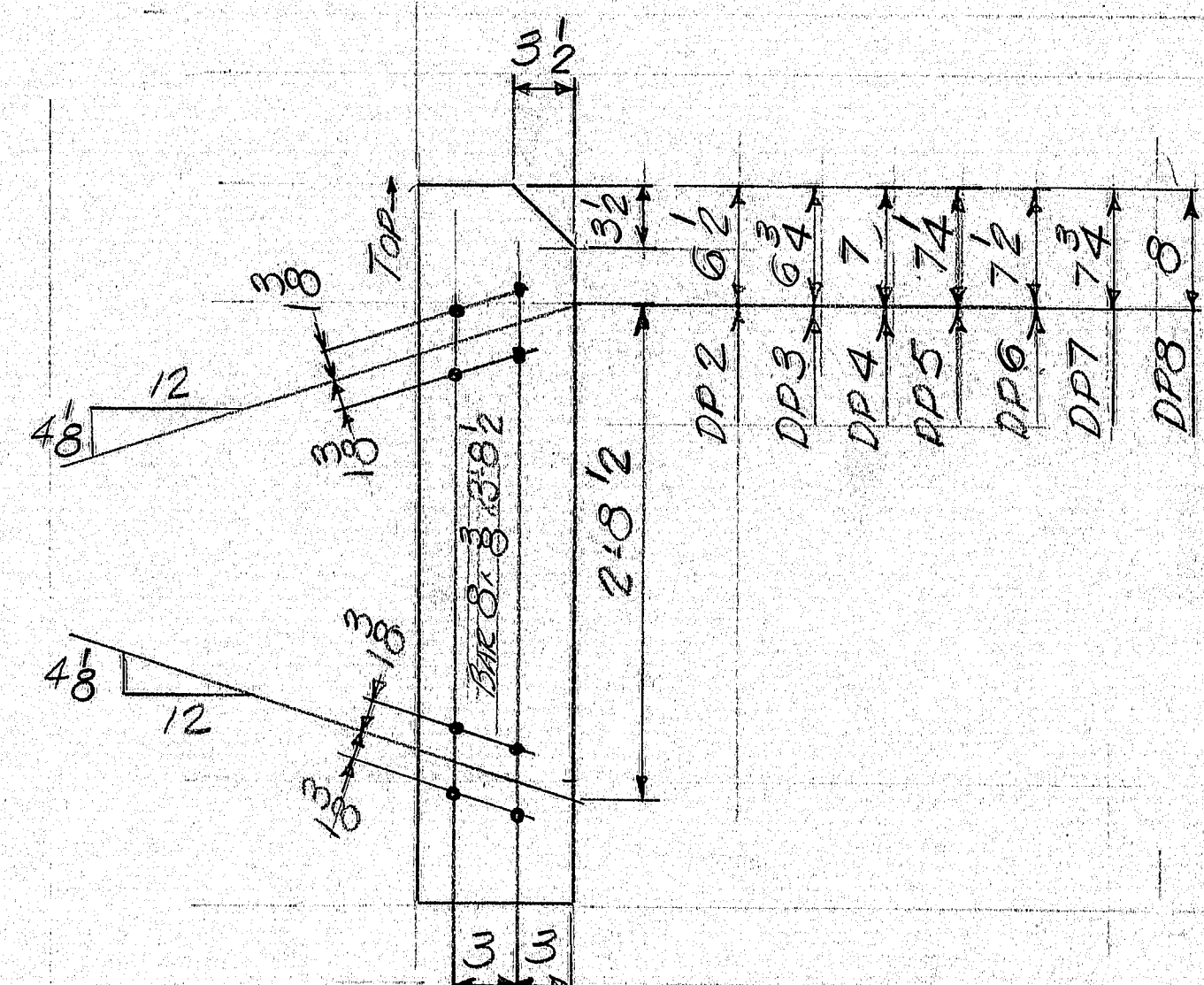
4-B53 ("X" = 5/16)
 2-B55 ("X" = 1/16)
 4-B57 ("X" = 1/8)



4-B51 12-NS1



20-DP1



4-DP2 3-DP5 ONE-DP8
 ONE-DP3 5-DP6
 5-DP4 ONE-DP7

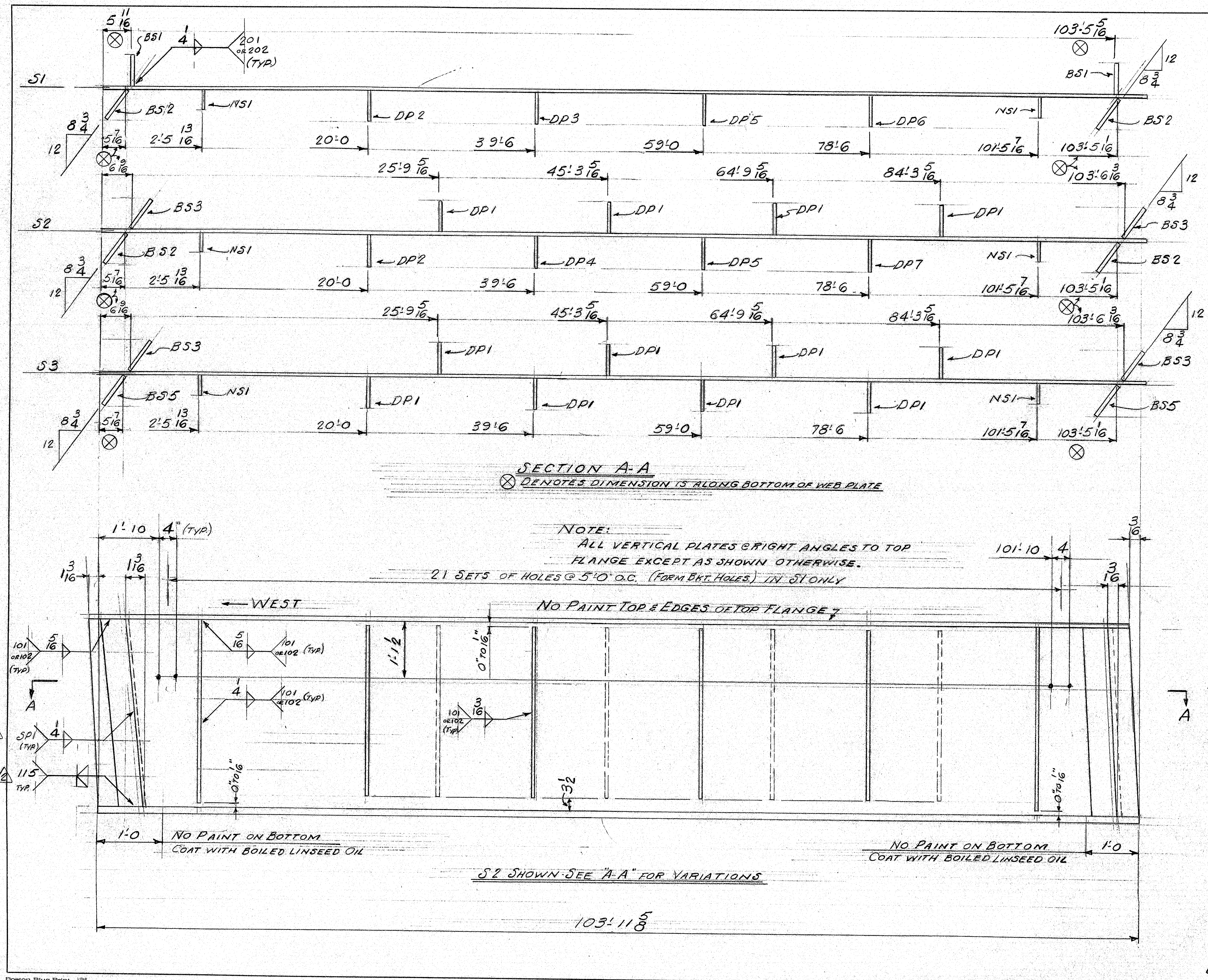
HOLES 15" 16"

FINAL

REVISION	PLF	DATE
APPR.	3-7	1-25-80
APPR.	4-4-80	4-15-80
SHOP	4-29-80	3-7-80
F. & O.		
DRAWN	PLF	1-16-80
CHECKED	EEF	3-3-80
REVISION		2-27-80
REVISION	PLF	4-4-80
REVISION	PLF	4-15-80

PROJECT NO. I-95-9(88)	
BEARING STIFFENERS, INTER. STIFFS, DIAPHRAGM PLATES, WEB ASSEMBLY	
MEGQUIER & JONES CORP.	
1156 BROADWAY SOUTH PORTLAND, MAINE 04106	
I-95 N.B. OVER TI MONEY ROAD SMYRNA, MAINE	
CUSTOMER	DAY & CURRIE
ARCHITECT	MAINE DEPT. OF TRANSPORTATION
JOB NO.	J253
DWG. NO.	3

161-81



SHIP BILL OF MATERIAL					J253	DWG. NO.	4
MARK	NO.	MARK	SHAPE	LENGTH	WT.	REMARKS	
S1	1		STRINGER				
S2	1		STRINGER				
S3	1		STRINGER				
	3	FP1	R 1 1/2 x 20	53	0	A572 GR.50	CHARPY V-NOTCH
	6	FP2	R 1 1/2 x 14	25	5 1/2	A572 GR.50	
	3	FP3	R 1 x 12	63	10	A572 GR.50	
	3	FP4	R 1 x 12	40	2 1/2	A572 GR.50	CHARPY V-NOTCH
	3	WPI	R 2 x 4 1/2	44	6		CHARPY V-NOTCH
	6	WPI	R 2 x 5 1/2	29	10		CHARPY V-NOTCH
	2	BS1	BAR 8 x 3/8	4	0	FIT	
	4	BS2	DO	4	0	FIT	
	4	BS3	DO	4	0	FIT	
	2	BS5	BAR 8 x 3/8	4	0	FIT	
	10	BB1	BAR 1 1/2 x 4	3	10	BACKING BAR	
	6	NS1	BAR 5 x 3/8	4	0	FIT	
	12	DP1	BAR 8 x 3/8	3	8 1/2		
	2	DP2	DO	3	8 1/2		
	1	DP3	DO	3	8 1/2		
	1	DP4	DO	3	8 1/2		
	2	DP5	DO	3	8 1/2		
	1	DP6	DO	3	8 1/2		
	1	DP7	BAR 8 x 3/8	3	8 1/2		
4A	326		3" BOLT	0	2	A325 TYPE 1	
4B	164		DO	0	2 1/2		
4C	84		3" BOLT	0	2 1/2		
4D	574		3" WASHER	0	2 1/2		
4E	90		3" BOLT	0	1 1/2	A307	
4F	90		3" WASHER	0	1 1/2		
STEEL A36 EXCEPT AS NOTED							
BLAST CLEAN SP6 (COMMERCIAL BLAST)							
PROJECT NO. 195-9 (88)							
DO NOT PAINT WITHIN 3" OF HOLES IN BS & DP ETS.							
CUSTOMER ORDER NO.							
REFERENCE DRAWINGS:							
HOLES: 15" Ø							
FIELD CONN: 3" Ø BOLTS A325 TYPE 1							
PAINT: TYP. 6152 TYPE II ORANGE-4 MILSWET							
STRINGERS (3)							
MEGQUIER & JONES CORP.							
1156 BROADWAY							
SOUTH PORTLAND, MAINE 04106							
I-95 N.B. OVER TIMONEY ROAD							
SMYRNA, MAINE							
CUSTOMER DAY & CURRIE							
ARCHITECT MAINE DEPT. OF TRANSPORTATION							
JOB NO. J253							
DWG. NO. 4							

FINAL

APPR. 3-7 1:25-80

APPR. 4-4-80 4:15-80

SHOP 3-7-80

F. & O.

DRAWN. RLF 1-17-80

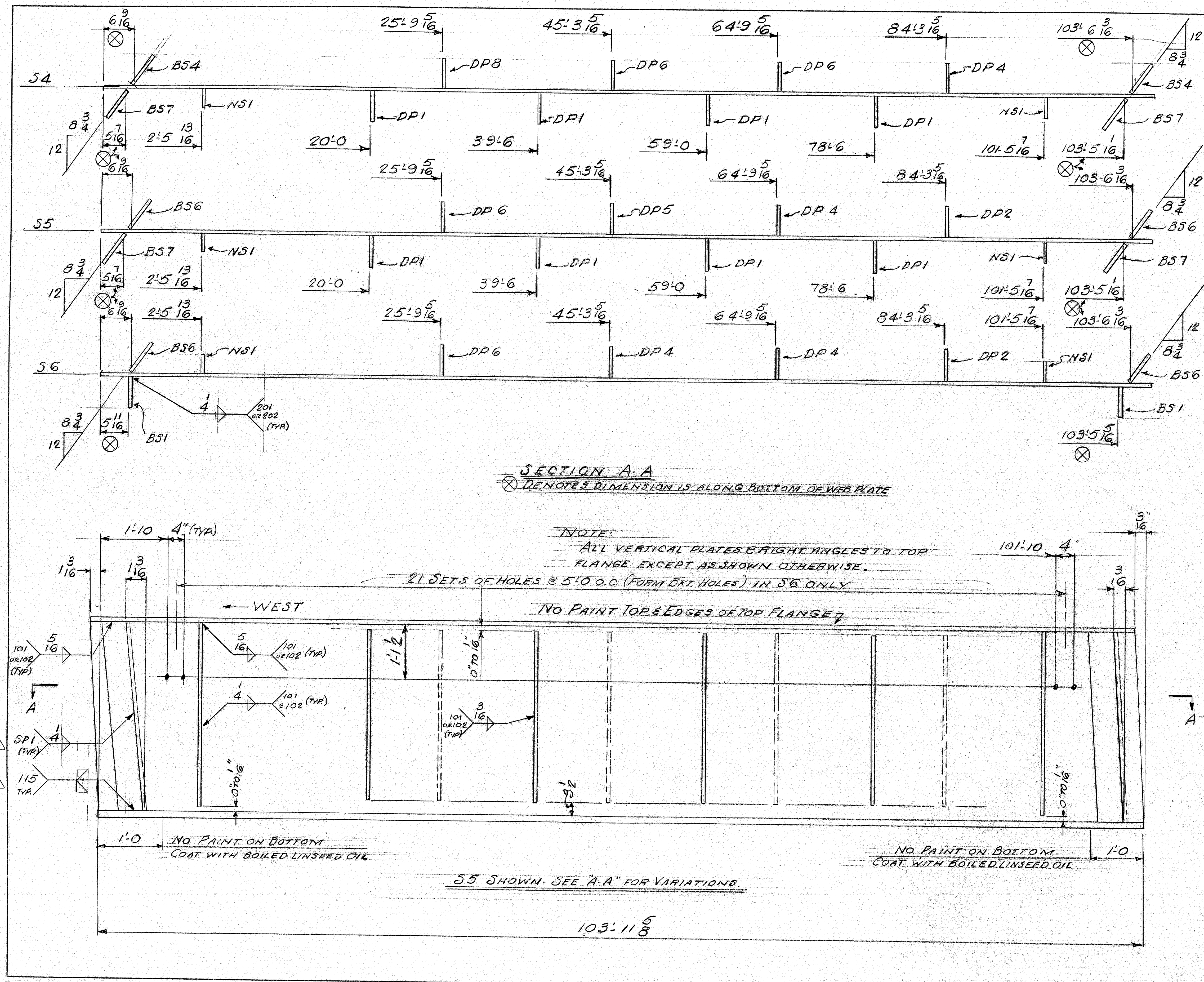
CHECKED. EET 3-3-80

REVISION 2-27-80

REVISION RLF 4-4-80

REVISION RLF 4:15-80

161-82



SHIP	BILL OF MATERIAL				JOB NO.	J253	DWG. NO.	5
MARK	NO.	MARK	SHAPE	LENGTH	WT.	REMARKS		
S4	1		STRINGER					
S5	1		STRINGER					
S6	1		STRINGER					
					</			

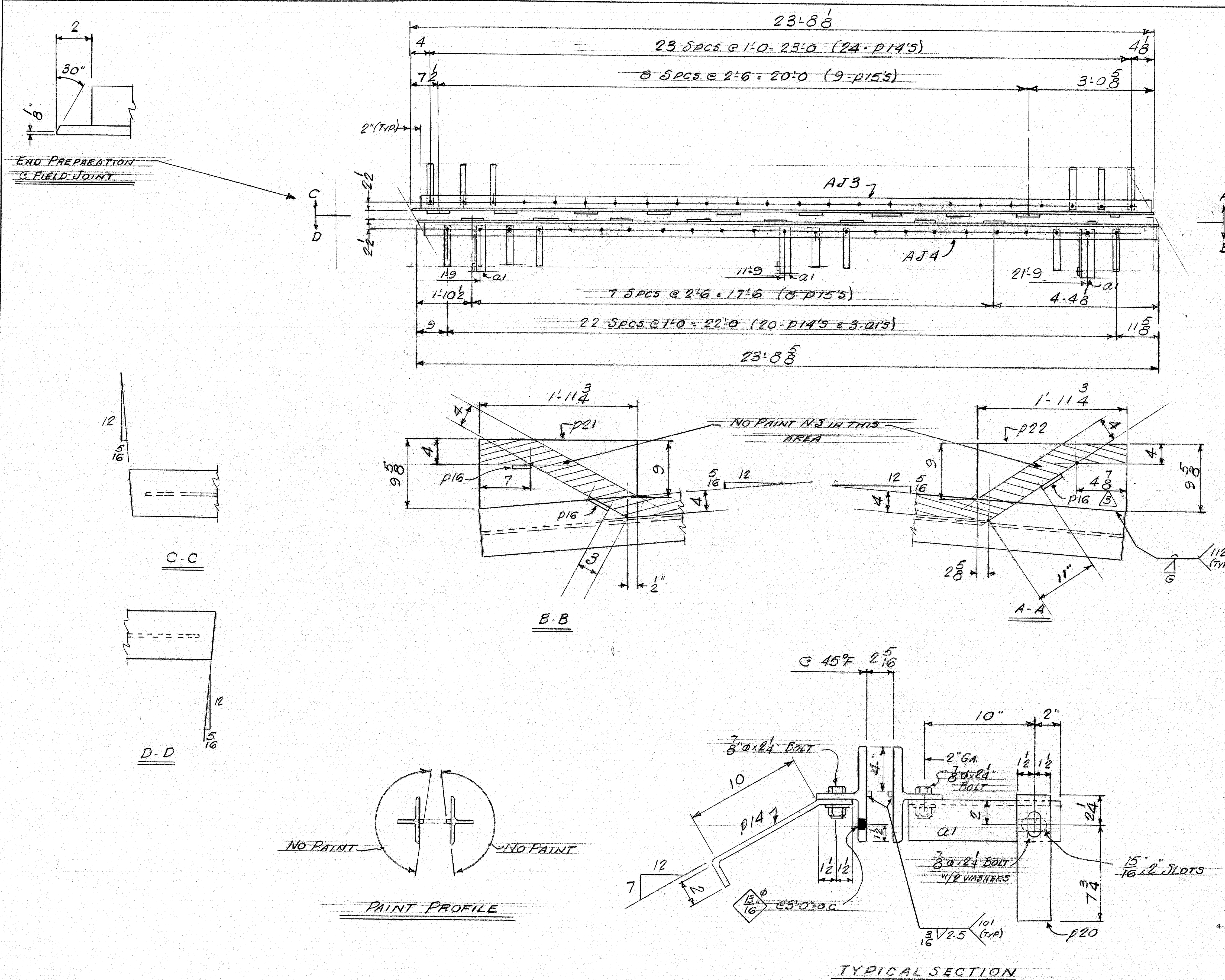
STEEL A36 EXCEPT AS NOTED
BLAST CLEAN SP6 (COMMERCIAL BLAST)
PROJECT NO. 195-9(88)

CUSTOMER ORDER NO.:
REFERENCE DRAWINGS:
HOLES: 1/2" Ø
FIELD CONN: 3" Ø BOLTS - A325 TYPE 1
PAINT: TYP 615 TYPE II ORANGE 4 MILS WET

STRINGERS (3)
MEGQUIER & JONES CORP.
1156 BROADWAY
SOUTH PORTLAND, MAINE 04106
T-95 NB. OVER TIMONEY ROAD
SMYRNA, MAINE
CUSTOMER: DAVE CURRIE
ARCHITECT: MAINE DEPT. OF TRANSPORTATION
JOB NO. J253 DWG. NO. 5

APPR.	3-7	1-25-80
APPR.	4-4-80	4-15-80
SHOP		3-7-80
F. & O.		
DRAWN	PLF	1-18-80
CHECKED	EET	3-3-80
REVISION		2-28-80
REVISION	PLF	4-4-80
REVISION	PLF	4-15-80

161-83



SHIP		BILL OF MATERIAL		JOB NO. J253		DWG. NO. 8	
MARK	NO.	MARK	SHAPE	LENGTH	WT.	REMARKS	
AJ3	1	WT4.24	23 8 1/8				
AJ4	1	WT4.24	23 8 1/8				
	3	Q1	13 1/2 x 3 1/2 x 3/8	1 1/2			
	44	P14	BAR 2 1/2 x 3/8	1 3		BEND	
	17	P15	BAR 3/8 x 1/2	1 0			
	3	P16	BAR 3/8 x 1/2	0 4			
	1	P21	R 3/8 x 9 5/8	1 1/2			
	1	P22	R 3/8 x 9 5/8	1 1/2			
	3	P20	BAR 3 x 3/8	0 10			
	50	SHOP	3/8 BOLT	0 24		A325-TYPE 1	
	53	SHOP	3/8 WASHER			A325-TYPE 1	

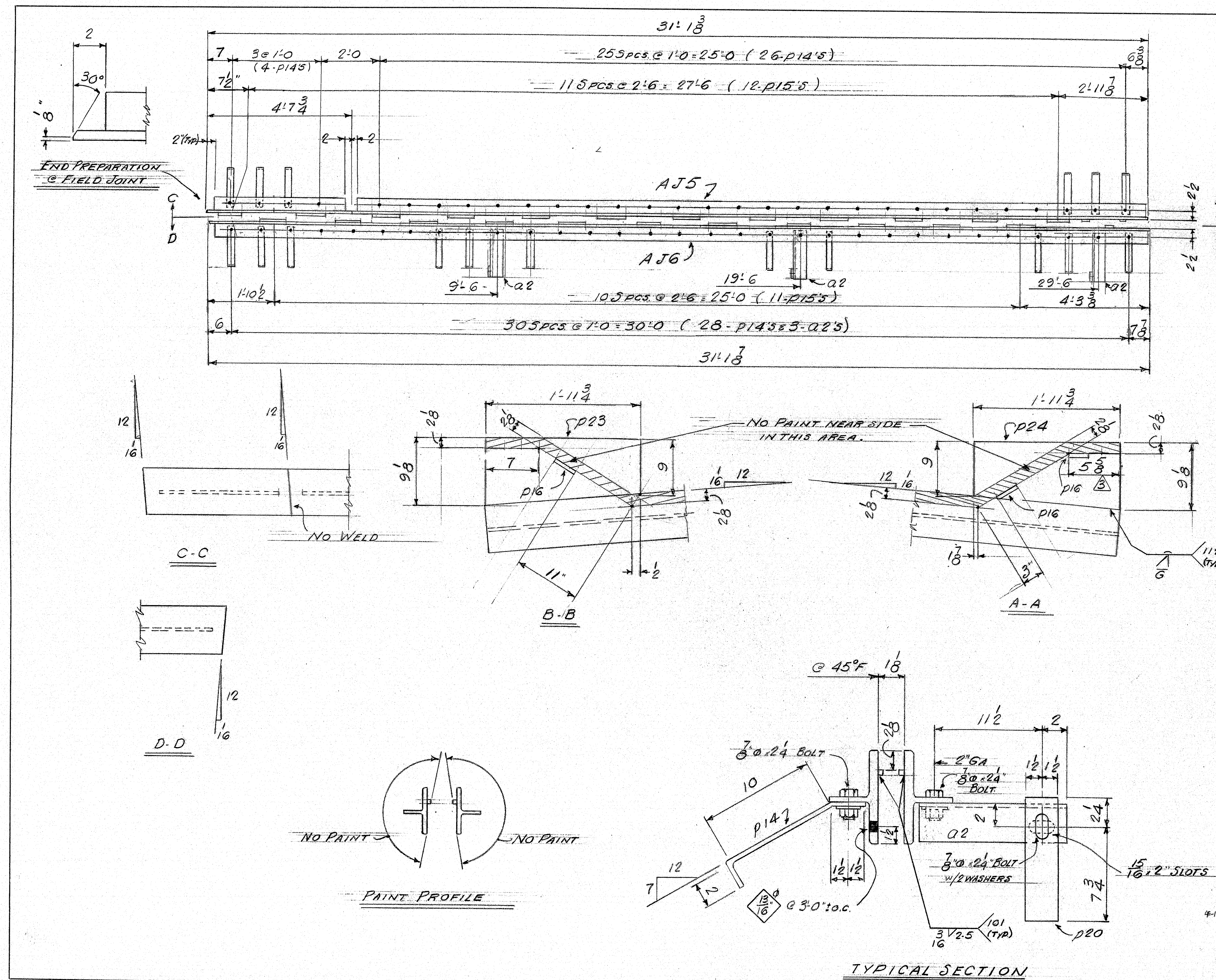
STEEL A36
BLAST CLEAN - SP6 (COMMERCIAL BLAST)
PROJECT NO. I-95-9 (88)

CUSTOMER ORDER NO.:
REFERENCE DRAWINGS:
HOLES: 1/8" EXCEPT AS NOTED
FIELD CONN: WELDS
PAINT: TYPE 155 TYPE II - 3 COATS ORANGE-4 MILS W/100

ARMORED JOINT ABUT. 1
MEGQUIER & JONES CORP.
1156 BROADWAY
SOUTH PORTLAND, MAINE 04106
I-95 N.B. OVER TIMONEY ROAD
SMYRNA, MAINE
CUSTOMER: DAY & CURRIE
ARCHITECT: MAINE DEPT. OF TRANSPORTATION
JOB NO. J253
DWG. NO. 8

APPR.	3-7	1-30-80
APPR.	3-20-80	4-4-80
SHOP	3-20-80	3-7-80
F. & O.		
DRAWN	PLF	1-29-80
CHECKED	E.E.T.	3-5-80
REVISION		2-29-80
REVISION		3-20-80
REVISION	PLF	4-4-80

161-86



SHIP		BILL OF MATERIAL			JOB NO. J253		DWG. NO. 9	
MARK	NO.	MARK	SHAPE	LENGTH	WT.	REMARKS		
AJ5	1		WT4x24	31 1 3/8				
AJ6	1		WT4x24	31 1 3/8				
	3	Q2	L3 1/2 x 3 1/2 x 3/8	1	3			
	58	P14	BAR 2 1/2 x 3/8	1	3	BEND		
	23	P15	BAR 3/8 x 3/4	1	0			
	3	P16	BAR 3/8 x 3/4	0	4			
	1	P23	R 3/8 x 9 1/2	1	1 1/2			
	1	P24	R 3/8 x 9 1/2	1	1 1/2			
	3	P20	BAR 3/8 x 3/8	0	10			
	64	SHOP	3/8 BOLT	0	24	A325-TYPE 1		
	67	SHOP	5/8 WASHER			A325-TYPE 1		
52	1	PREFORMED ELASTIC JOINT SEAL - 56'-0" ±				ACMA SEAL #J162 P.O.#1529		

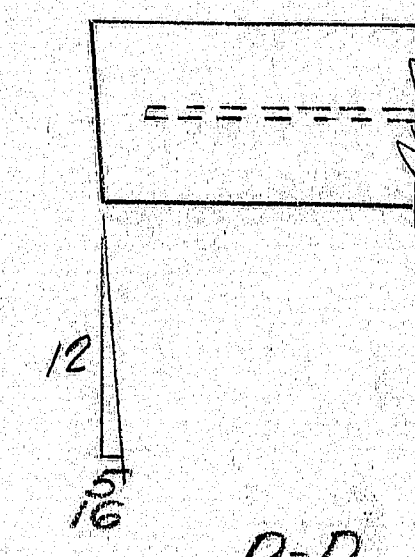
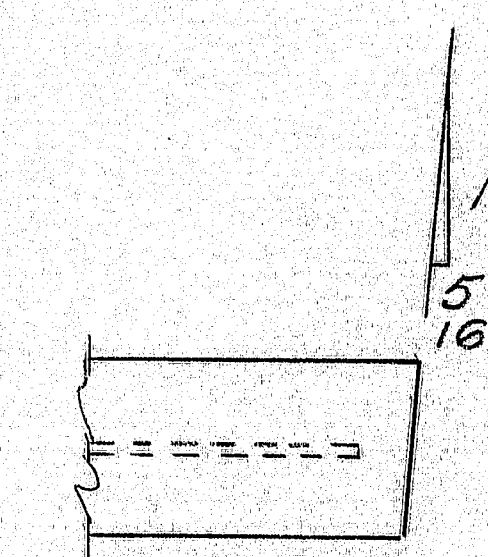
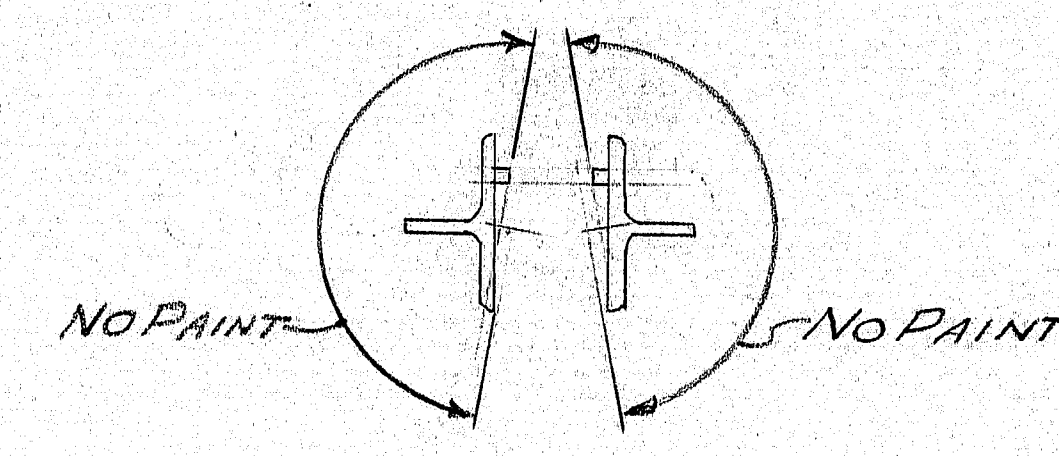
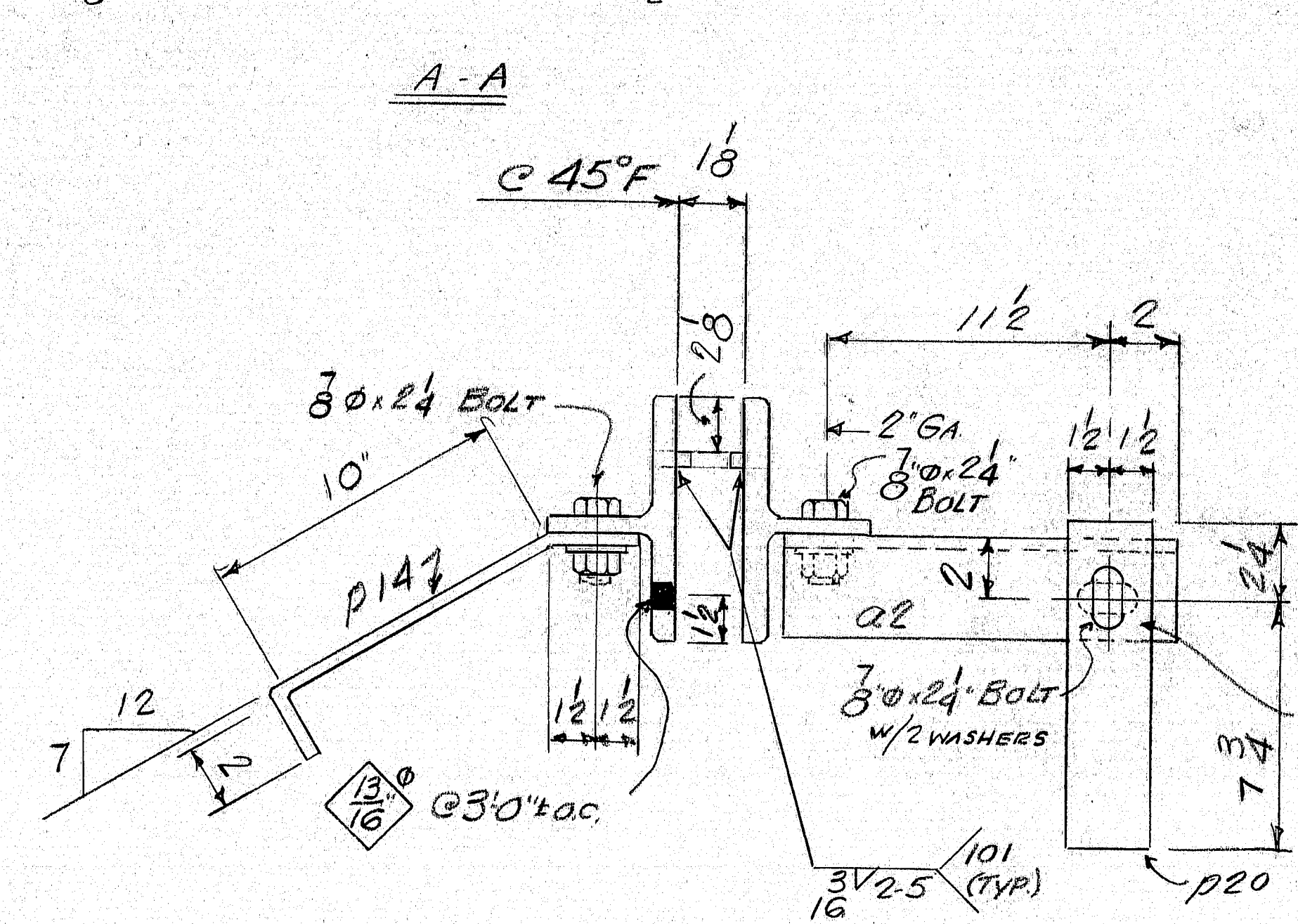
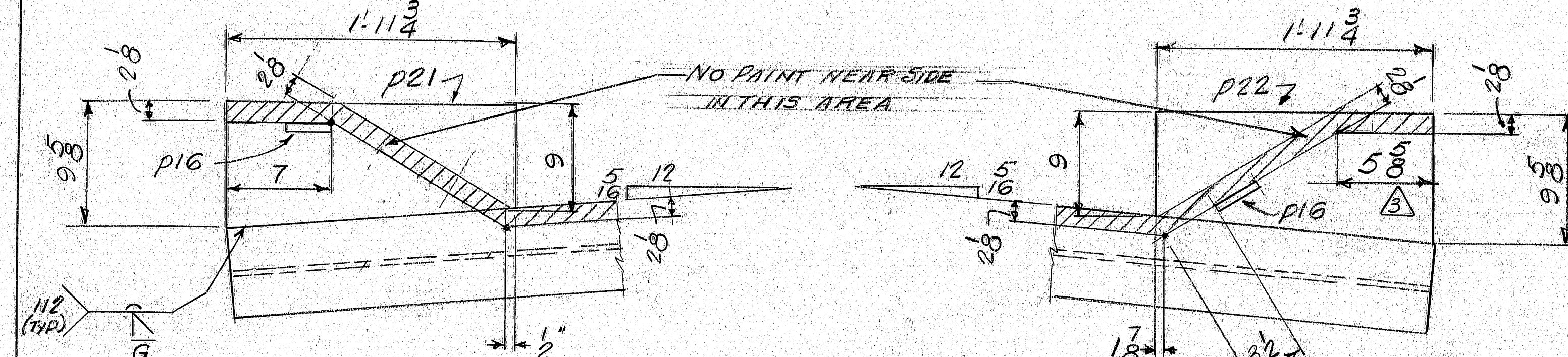
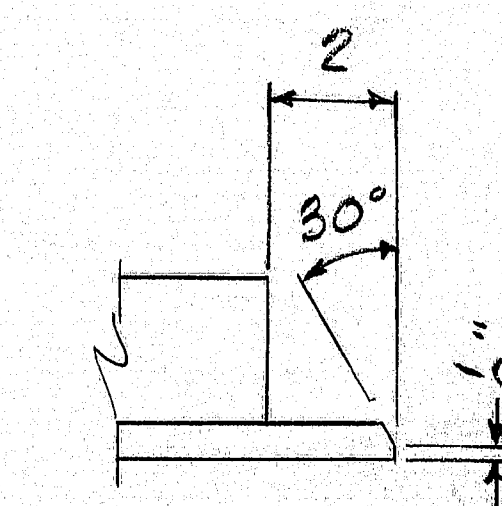
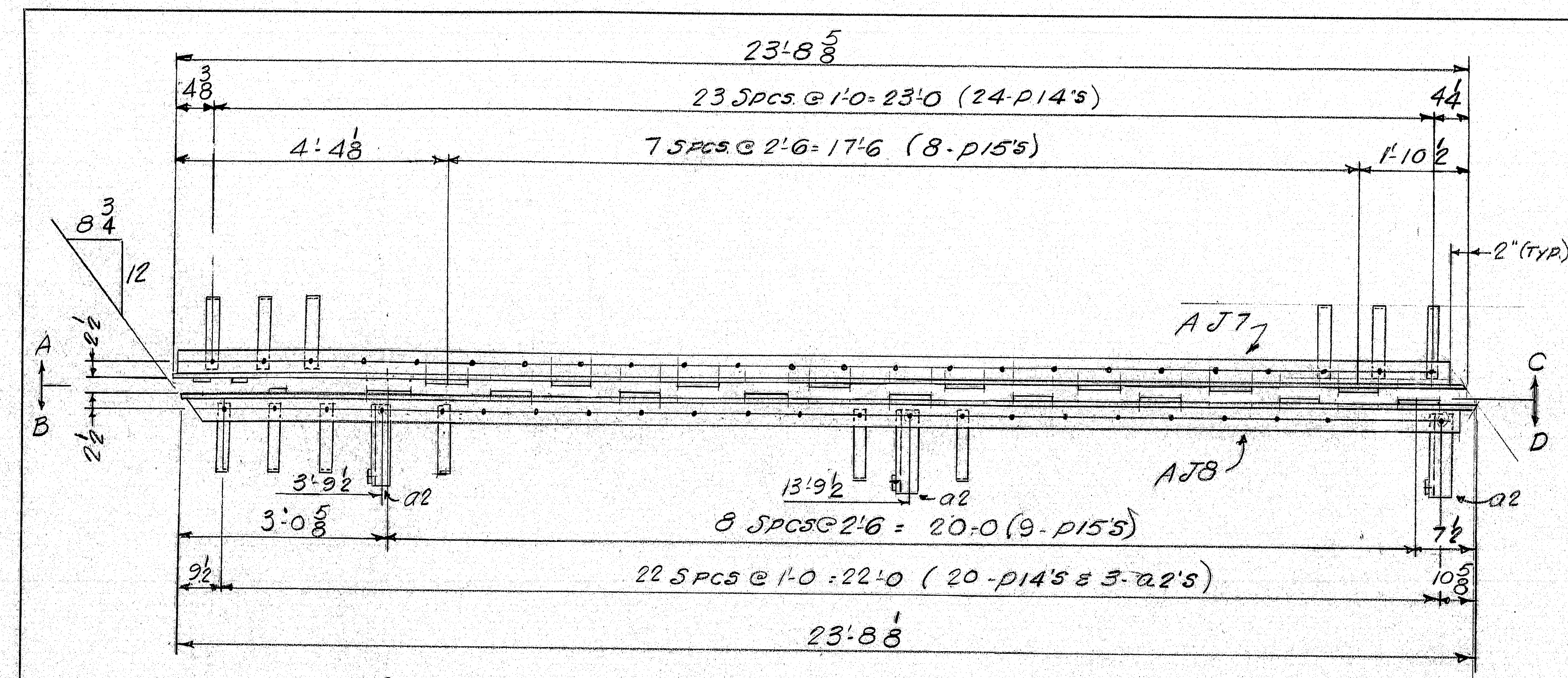
STEEL A36
BLAST CLEAN S-P6 (COMMERCIAL BLAST)
PROJECT NO. I-95-9 (88)

CUSTOMER ORDER NO.
REFERENCE DRAWINGS:
HOLES: 1/8" EXCEPT AS NOTED
FIELD CONN: WELDS
PAINT: TYP. 65% TYPE II, 3 COATS ORANGE-2 MILS WET (JOINT)

ARMORED JOINT - ABUT. 2
MEGQUIER & JONES CORP.
1166 BROADWAY
SOUTH PORTLAND, MAINE 04106
I-95 NB. OVER TIMONEY ROAD
SMYRNA, MAINE
CUSTOMER: DAY & CURRIE
ARCHITECT: MAINE DEPT. OF TRANSPORTATION
JOB NO. J253
DWG. NO. 9

APPR.	3-7	1-30-80
APPR.	3-20-80	4-4-80
SHOP	3-20-83	3-7-80
F. & O.		
DRAWN	RLF	1-29-80
CHECKED	EEF	3-5-80
REVISION		2-29-80
REVISION		3-20-80
REVISION	RLF	4-4-80

161-87



SHIP		BILL OF MATERIAL		JOB NO. J253		DWG. NO. 10	
MARK	NO.	MARK	SHAPE	LENGTH	WT.	REMARKS	
AJ7	1		WT4x24	23'8 5/8			
AJ8	1		WT4x24	23'8 5/8			
	3	A2	13 1/2 x 3/8	1	3		
	4	P14	BAR 2 1/2 x 3/8	1	3	BEND	
	17	P15	BAR 3/4 x 7/8	1	0		
	2	P16	DO	0	4		
	1	P21	1/2 x 3/8	1	1 1/2		
	1	P22	1/2 x 3/8	1	1 1/2		
	3	P20	BAR 3/8 x 3/8	0	10		
	50	SHOP	3/8 BOLT	0	24	A325-TYPE 1	
	53	SHOP	3/8 WASHER	0	4	A325-TYPE 1	

STEEL A36
BLAST CLEAN SP6 (COMMERCIAL BLAST)
PROJECT NO. I-95-9 (88)

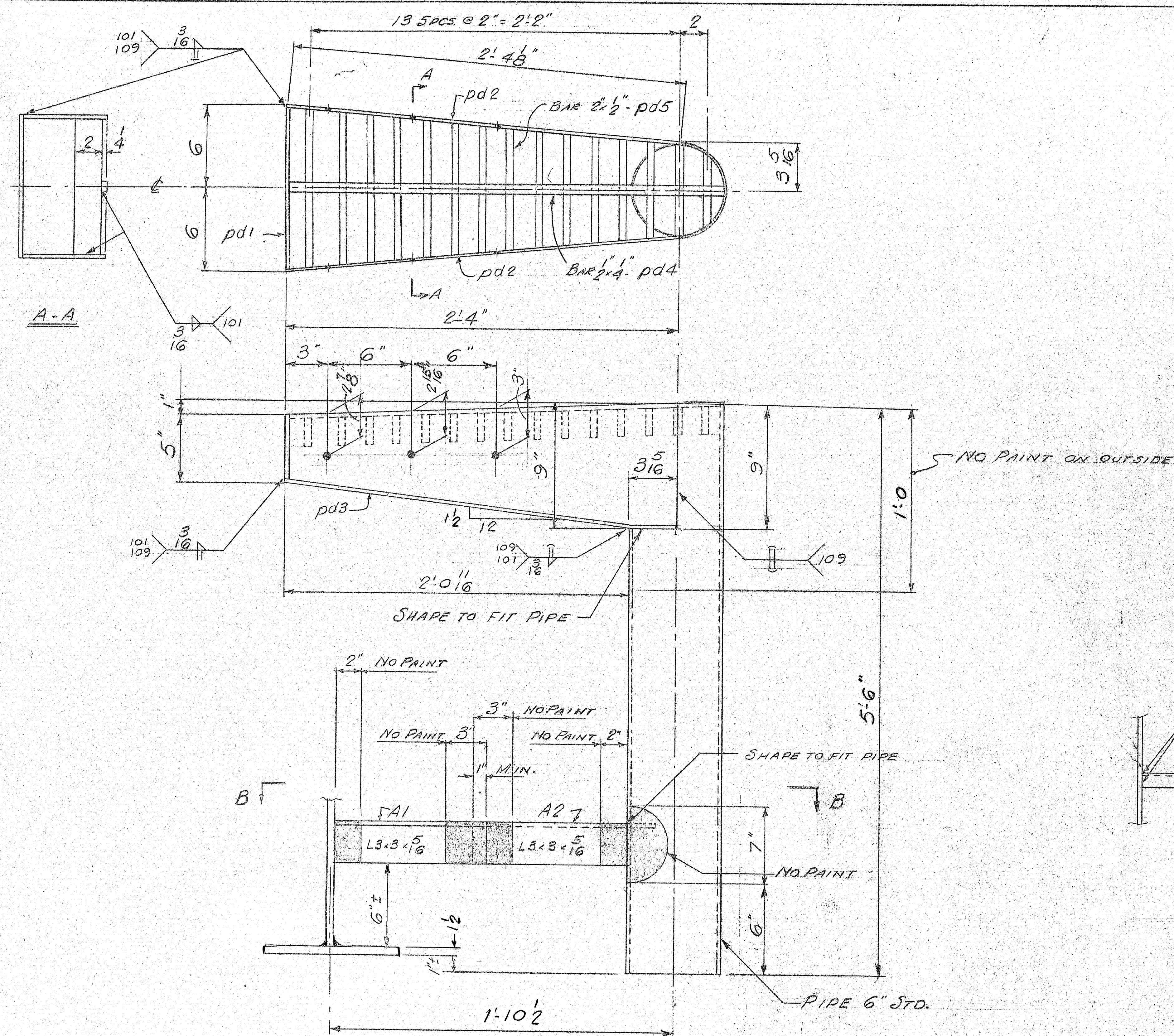
CUSTOMER ORDER NO.:
REFERENCE DRAWINGS:
HOLES: 15/16" EXCEPT AS NOTED
FIELD CONN: WELDS

PAINT: F6063 TYPE 1, 3 COATS ORANGE 4 MILS WET/COAT
ARMORED JOINT ABUT. 2

MEGQUIER & JONES CORP.
1156 BROADWAY
SOUTH PORTLAND, MAINE 04106
I-95-NB OVER TIMONEY ROAD
SMYRNA, MAINE
CUSTOMER: DAY & CURRIE
ARCHITECT: MAINE DEPT. OF TRANSPORTATION
JOB NO. J253
DWG. NO. 10

APPR.	3-7	1-30-80
APPR.	3-20-80	4-4-80
SHOP	3-20-80	3-7-80
F. & O.		
DRAWN	RLF	1-29-80
CHECKED	F.ET	3-5-80
REVISION		2-29-80
REVISION		3-20-80
REVISION	RLF	4-4-80

161-88



DRAIN
MAKE 2 MARK "DR"

SHIP		BILL OF MATERIAL			JOB NO.		DWG. NO.	
MARK	NO.	MARK	SHAPE	LENGTH	WT.	REMARKS		
DR	2		PIPE 6" STD	56		ASTM A53 GRADE B		
	2	pd1	2 1/2 x 4 3/4	0	112			
	4	pd2	2 1/2 x 9	2	48			
	2	pd3	2 1/2 x 12	2	48	BEND & FIT		
	2	pd4	2 1/2 x 4	2	62			
	2	pd5	2 1/2 x 12	0		CUT TO FIT		
A1	2		L3 x 3 x 5/16	10				
A2	2		L3 x 3 x 5/16	10				

161-89